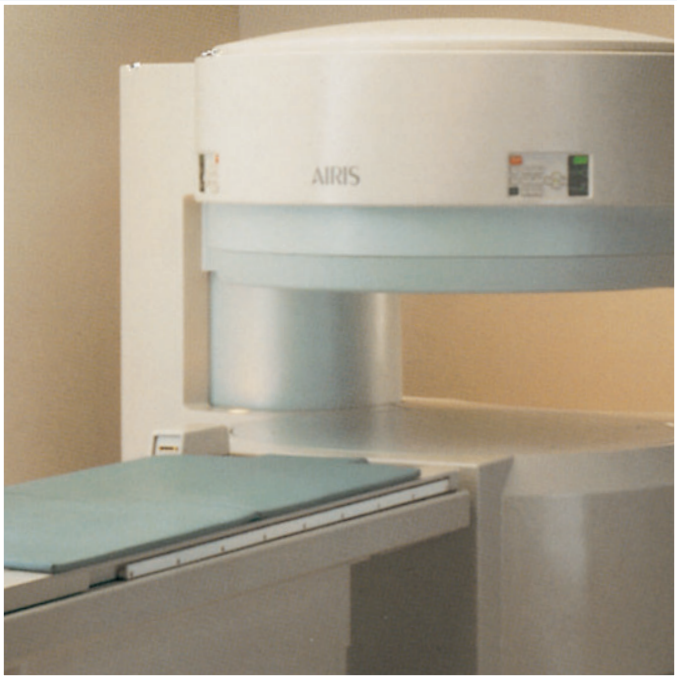


OPEN MRI

A WELCOME
ADVANCE IN IMAGING
TECHNOLOGY



A Guide for Patients

Midwest 
Health Care Network

Open MRI – A Welcome Advance in Imaging Technology

Welcome to Open MRI Imaging Specialists. Our open MRI facilities provide you with a quieter, more comfortable exam, while still producing the high quality detailed images that your doctor needs for determining an accurate diagnosis. The larger opening permits easy access during the exam, which can be especially helpful for those who are claustrophobic. An open MRI is a terrific alternative for those individuals who are restricted by the smaller size constraints of a closed MRI. An open MRI is also less threatening for children than the closed tunnel. Additionally, a family member or friend may accompany an apprehensive patient during the scan.

What Is an MRI?

MRI stands for **M**agnetic **R**esonance **I**maging. MRI is a diagnostic imaging technique that combines a powerful magnetic field with computer technology to produce very detailed images of the body's soft tissues, which include muscles, ligaments, knee meniscus, the nervous system and the brain. An MRI is a painless and non-invasive method used by physicians to look inside the body without using X-rays or radiation. It provides an accurate image of most abnormalities and often times can reduce the need for biopsies, exploratory surgery and other more invasive procedures. To the best of our knowledge, there are no known side effects from an MRI scan.



What Happens During an MRI Scan?

After registering with the receptionist, you will be welcomed by a friendly, knowledgeable MRI Technologist who will discuss the procedure with you and confirm that you have no metal implants or other conditions that could interfere with the scan.

During the procedure, you will lie on a padded table that will slowly slide into the open MRI. Most scans take less than an hour to complete. As the MRI scanner calibrates to obtain each series of images, you will hear buzzing and thumping noises, but at no time will you experience any physical sensation or discomfort. Patients often fall asleep during the scan. While the images are being recorded, it is important to remain still; even the slightest movement can distort the image and limit its diagnostic value. We encourage you to bring your favorite CD or tape (no ipods please) to play during the scan. For your convenience, an intercom system is available should you need anything.

How Do I Prepare for an MRI?

Nothing special is required prior to your MRI scan. Simply follow your normal daily routine, including taking medication and meals. Patients should wear comfortable, loose clothing and avoid wearing anything with metal. A small locker is available for you to lock up your clothing and valuables.

Because of the magnetic field, you should avoid wearing or carrying:

- Credit Cards
- Hairpins
- Cell Phones
- Keys
- Jewelry
- Hearing Aids
- Coins
- Watches
- Glasses
- Any Body Piercings
- Other Metal Objects



Can Anyone Undergo an MRI?

Although an MRI is completely safe and painless, some people should not undergo an MRI, or will need to make special arrangements. Any of the following conditions may interfere with your MRI. Please call us immediately if you:

- Have a cardiac pacemaker
- Have a prosthetic heart valve
- Have a surgical clip, joint replacement, or any metallic implant
- Have suffered a shrapnel wound
- Have any metallic chips or splinters in the eye
- Have inner ear implants
- Are pregnant, or think that you might be



What is an MRA?

Magnetic Resonance Angiography (MRA) is a technology developed to provide a detailed view of the blood vessels. This painless procedure is done in the open MRI scanner and takes about one hour to complete. There are no special preparations for an MRA.

What if I am Claustrophobic?

Patients that are too claustrophobic to undergo an MRI scan do have options. Many of our claustrophobic patients obtain a prescription for a mild sedative from their physician and have a family member drive them to and from their exam. With prior notice, arrangements can be made for patient sedation including a light general anesthesia, services not typically offered at free standing facilities.

Post Examination Information

There are no post examination restrictions. You may drive a car or return to work. Your images will be reviewed by a specially trained radiologist. Your prescribing physician should receive a report of the findings within 48 hours of your completing the MRI scan.

What if I Have More Question

The entire staff at MRI Imaging Specialists, LLC strives to provide professional care for our patients. We realize you may experience anxieties and we are here to assist you with your concerns. If you should have any questions or concerns, please contact us at 847-437-9889.

The Difference Is... Better Care.

The professionals at MRI Imaging Specialists are here to provide the highest quality of care. Come experience what makes us special, ***the difference is... BETTER CARE.***

Web Site

For additional information about our practice or our physicians, please visit our web site at www.midwestsportsmed.com

Call now...

To schedule an appointment, call the central scheduling desk at 847-437-9889.



901 Biesterfield Road, Suite 300
Elk Grove Village, IL. 60007
847-437-9889
Fax: 847-437-4149

375 S. Roselle Road
Schaumburg, IL 60193
847-437-9889
Fax: 847-301-2829